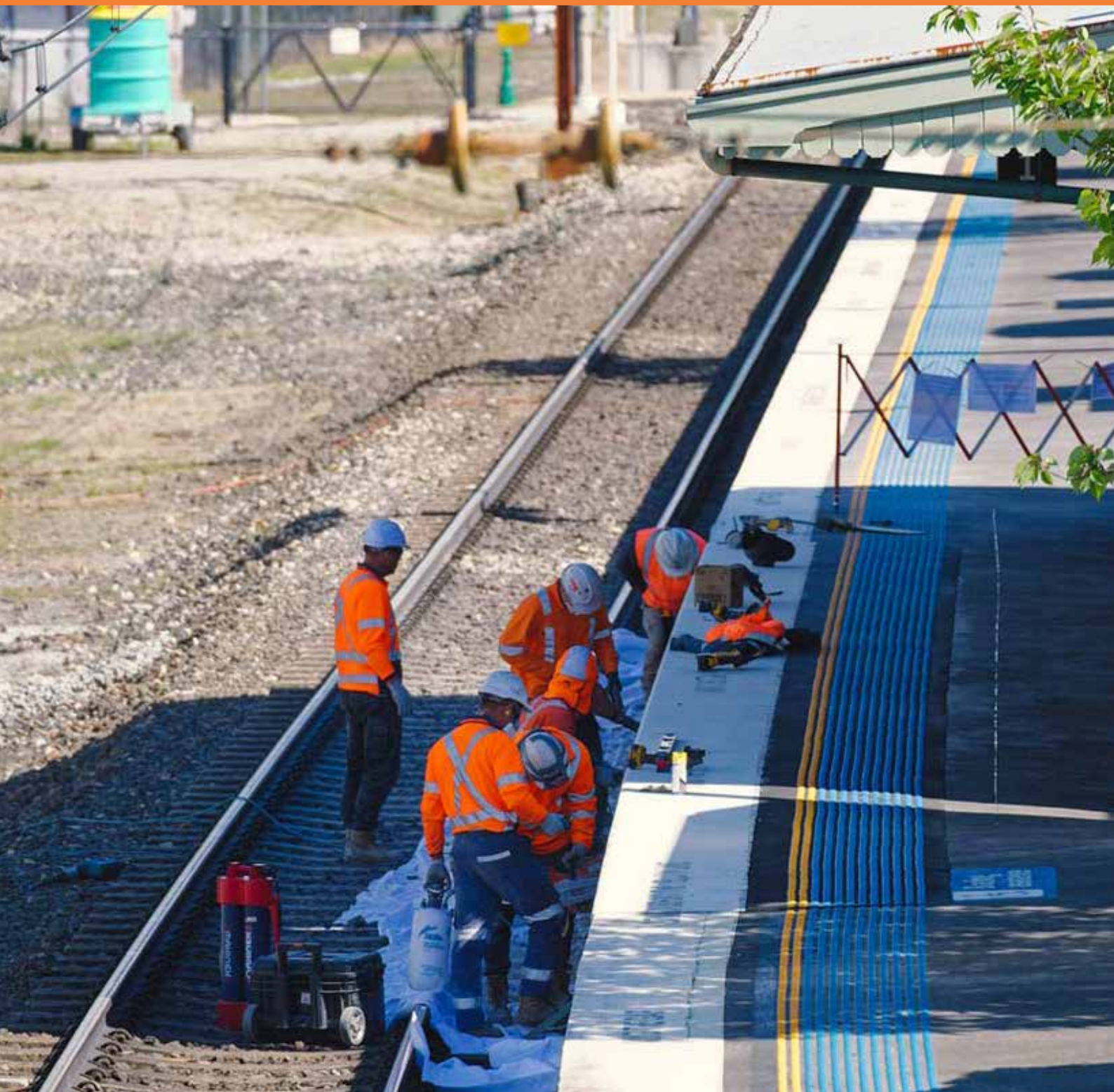


# PERFECT REMEDIATION

*We get it done*



**CAPABILITY STATEMENT**



## ABOUT US

PERFECT REMEDIATION AND REFURBISHMENT SERVICES THE RESIDENTIAL, RETAIL, COMMERCIAL AND INDUSTRIAL SECTORS IN GREATER SYDNEY AND BEYOND. OUR CAPABILITIES EXTEND TO TRANSPORT, INFRASTRUCTURE,

Alongside our Contracting, Concrete Care and Hire divisions, Perfect Remediation is the final quadrant to form the Perfect Group. Four divisions. One group. Many solutions.

With dynamic capabilities spanning from structural steel repairs to concrete and crack injection, waterproofing, sealing, caulking, membranes & protective coatings, make Perfect Remediation and Refurbishment your only remediation works provider.

*We're dedicated to sustainability and ensure safety, quality and accountability standards across our company. So you can have confidence we'll get your job done safely, with minimum impact on the environment.*

*We get it done*  
**SAFELY**



## CORE VALUES



### POSITIVE ATTITUDE

We encourage a healthy, positive work environment. We believe that facilitating a work environment with happy, healthy staff is paramount to an effective and successful workplace.



### SAFETY AT WORK

Our staff are courteous, respectful and professional. They are expected to wear the uniform provided to them and to undergo training in safety and proper equipment use.



### PUNCTUALITY & HONESTY

Our staff are punctual, honest and responsible. They are expected to provide the highest level of service to all clients and to uphold the integrity of the company.



### STRONG TEAM

We only employ staff who have an attitude that reflects the culture of Perfect. That is, a tight knit group who work together to perform the work at hand. We are dedicated, skilled and motivated to provide the best service for our clients and our company.



### CARE FOR EQUIPMENT

The quality of our equipment is high. We use only trusted brands such as Hilti, Tyrolit, Makita and Husqvarna. Our staff take pride in operating and maintaining this equipment.



### INCLUSIVE WORKPLACE

Perfect is an equal opportunity employer, we believe that everyone, no matter what race, sex or religion, should be afforded the same opportunities. That's why we have a diverse workforce from over 38 different countries.



## COMPANY DETAILS

**Address:** 4/8 Lilian Fowler Place,  
Marrickville, NSW, 2204

**Ph:** +61 407 491 888

**Email:** tom@perfectremediation.com.au

**Web:** www.perfectremediation.com.au

**ICN Gateway Company ID:** 148145

**Employees:** 30

**ABN:** 93 619 779 065

**Local Manufacturer:** No

**Foreign Manufacturer:** No

**Importer:** No

**Exporter:** No

**NT CAL Accredited:** No

**Works in Remote Locations:** Yes

**Australin Indigenous Owned:** No

## INDUSTRIES SERVED

**CONSTRUCTION & ENGINEERING**

**DEFENCE**

**REMEDIATION**

**RAIL**

**TRANSPORT**

**INFRASTRUCTURE**

## ACCREDITATIONS

**AS/NZS 48012001 OH&S Management System**

**ISO 900 12015 Quality Management System**

**ISO 140012015 Environmental Management System**

**CM3 Safety Management System**

## RECENT PROJECTS



### Remediation - Mascot Towers - 2020 \$500,000

Client: SBM

Perfect Contracting was contracted by SBM (Structural Building Management) to undertake remedial works of expansion joints within Mascot Towers, located 1-5 Bourke Street, Mascot. All works were completed in one job establishment over the duration of 8 weeks, all within business hours.

### Muswellbrook Water Treatment Plant - 2020 \$300,000

Client: Muswellbrook Shire Council

When the Muswellbrook Regional Council needed specialist demolition and remediation works at their Water Treatment Plant, they turned to the one contractor they knew would answer the call. With a laundry list of challenging works on scope, Perfect Remediation was enlisted to mobilise their fleet of men and machines to the beautiful regional centre for a nine week deployment.



### Cumberland Council - Public Pool - 2021 \$600,000

Client: Cumberland Council

Perfect Remediation recently carried out remediation work of a culvert in a public pool for Cumberland Council. These works involved road sawing the culvert the length of the pool. The culvert was then waterproofed, steel reo installed and the culvert was re-poured with Shrinkage Limited 80-60 concrete. While Perfect Remediation was working on this project we also noticed defects with the ballast tank. So next we cut into the ballast tank and stripped the walls, we waterproofed the walls and floors and then re-poured the capping slab. Once the culvert was complete it was tiled and the pool was recommissioned.





## OUR CLIENTS

**JOHN  
HOLLAND**



**HASLIN**

**Downer**



**Fulton Hogan**

*We are working with commercial, industrial and government clients on short and long term projects across NSW.*





# PERFECT

*We get it done*



PERFECT GROUP is comprised of four ISO certified companies: Perfect Contracting, Perfect Hire, Perfect Concrete Care and Perfect Remediation. Our clients benefit from the combined experience and capabilities of four divisions.



#### PERFECT CONTRACTING

Perfect Contracting is an industry-leading unrestricted demolition and hazmat removal contractor, working with commercial, industrial and government clients on projects across NSW.

- ✓ DEMOLITION
- ✓ MAKE SAFE
- ✓ WASTE REMOVAL
- ✓ ASBESTOS REMOVAL

[www.perfectcontracting.com.au](http://www.perfectcontracting.com.au)



#### PERFECT HIRE

Perfect Hire expertise lies in providing quality skilled labour, trades and operators for large infrastructure projects all across NSW.

- ✓ SKILLED LABOUR HIRE
- ✓ RECRUITMENT
- ✓ TRADESMAN HIRE
- ✓ TEMP TO PERMANENT

[www.perfecthire.com.au](http://www.perfecthire.com.au)



#### PERFECT CONCRETE CARE

Our Concrete Care division that specialises in all forms of concrete cutting, coring, scanning, patching, grinding and polishing.

- ✓ CONCRETE GRINDING
- ✓ CONCRETE CUTTING
- ✓ CONCRETE CORING
- ✓ CONCRETE SCANNING

[www.perfectconcretecare.com.au](http://www.perfectconcretecare.com.au)



#### PERFECT REMEDIATION

Our Remediation division possess dynamic capabilities, spanning from structural steel repairs to concrete crack injection, sealing waterproofing, caulking, membranes and protective coatings.

- ✓ REMEDIATION
- ✓ REFURBISHMENT
- ✓ CONCRETE REMEDIATION
- ✓ STEEL REMEDIATION

[www.perfectremediation.com.au](http://www.perfectremediation.com.au)

## CONTACT

---

Perfect Remediation Pty Ltd  
ABN: 93 619 779 065

4/8 Lilian Fowler Place,  
Marrickville NSW 2204

TOM MATANOVIC - +61 407 491 888, (02) 8021 1784  
[info@perfectremediation.com.au](mailto:info@perfectremediation.com.au)  
[www.perfectremediation.com.au](http://www.perfectremediation.com.au)

